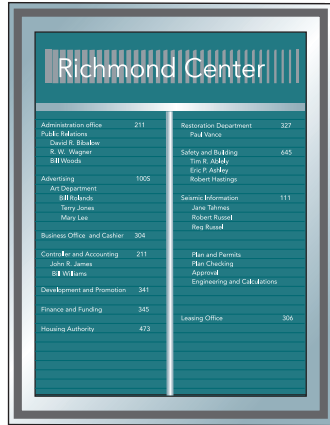




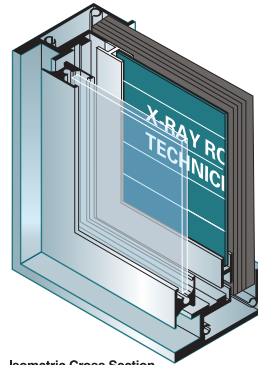
Interior Directories - 325 & 300A Series Directories i Non-illuminated Strip Directory i Technical Data

Exterior & Interior Signage • Digital Imaging • Column Covers • Illuminated & Non-illuminated Directories • Custom Fabricated Graphics

325 Series • R2C/2H5
Size: 17" w x 20 1/2" h



325 Series Monumental Frame For All Sizes



Isometric Cross Section

The 300A & 325 Series non-illuminated multiple module directories combines a series of 7 1/2" wide strip directories into a continuous common outer frame.

Directory Sizes

Two Frame configurations are available - 300 Series lighter frames for smaller directories and the 325 Series Monumental Frame for architectural applications. All sizes are available in Standard lighter frame and in the Monumental Frame series. Standard sizes are below:
Widths: 16", 23 1/2", 31 1/4"
Heights: 15 1/2", 23", 30 1/2" & 38"
Special sizes, combining several columns of copy within one unit, are available, using the 325 series. Wider dimensions to accommodate additional copy columns should use 325 Series heavy frame directory series.

Aluminum Frame Finishes

Anodized clear satin natural, medium bronze duranodic 312 and black duranodic. Painted finishes in custom colors are available

Cover Panels and Door Types

Standard cover panel is a hinged clear glass panel that is held in place by spring retainers. A clear acrylic plastic cover panel material can be substituted for clear glass if required. Doors with tamper-proof retainers for locking can be specified. A dust-seal, that is recessed into the reveal area between the frame and glass cover panel or door, assures perfect alignment and ease of maintenance.

Header Panel Information

Header panels are offered in either 5" or 8" heights and the width dimension is dependent upon the number of directory modules required. A standard 1/2" channel is maintained between directory and header panel. The last digit in header order code, such as R3/3H5 or R3/3H8 indicates header panel height.

Mounting Information

Units are surface mounted as standard or may be recessed into a finished edge opening. Mounting brackets are supplied with each directory. Fabrication drawings indicating all details are provided for approval.

Directory Strip Information

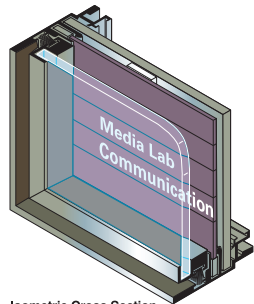
Description: Non-illuminated acrylic plastic name strips are retained within the channels of the frame and are stacked one upon the other. Strips are completely interchangeable and can be moved to any point when changes occur.
Materials: .125" thick satin matte finish opaque acrylic with integral color.
Size: 1/2" x 7 3/8" x 1/8".
Colors: 24 standard Vomar acrylic colors.
Copy color: Screen-printed black or white.
Letter styles: 12 styles set in 3/16" Cap ht.
Note: Each directory module is shipped with either inserted blank strips or printed strips per copy requirements.

300A Series • R2C/2H5
Size: 17" w x 20 1/2" h



325 Series Monumental Frame For All Sizes

300 Series Standard Frame For Smaller Directories



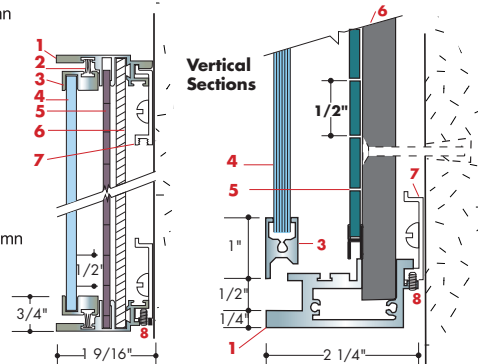
Isometric Cross Section

Section drawing description 300 & 325 Series

- 1 Aluminum Outer Frame Extrusion
Frame Depth: 1 9/16" & 2 1/4"
- 2 Dust Seal
- 3 Glass Cover Panel Frame Extrusion
- 4 Clear Glass Cover - 3/16" & 1/4" Thick
- 5 Acrylic Name Strips
Size: 1/2" X 7 3/8" X 1/8"
Special Width Sizes available
- 6 Tempered Hardboard / Particle Board
- 7 Mounting Bracket or toggle as required
- 8 Allen Head Set Screw

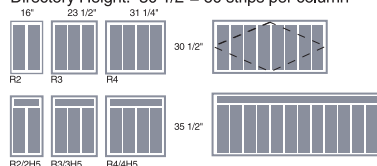
300 Series Standard Frame

325 Series Monumental Frame

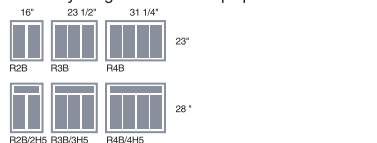


Standard Directory Sizes

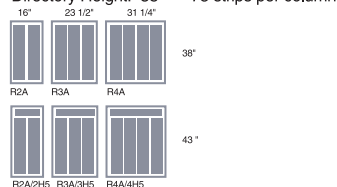
Directory Height: 30 1/2" = 60 strips per column



Directory Height: 23" = 45 strips per column



Directory Height: 38" = 75 strips per column



Directory Height: 15 1/2" = 30 strips per column

