

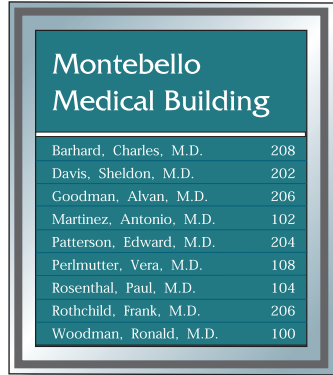


Interior Directories - 425 & 400 Series Directories i Non-illuminated Wide Strip Directory i Technical Data

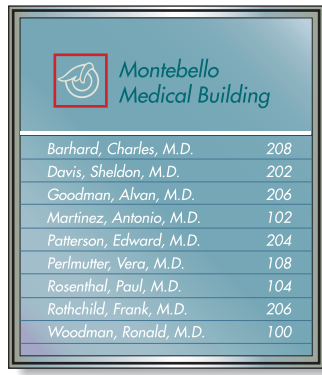
Exterior & Interior Signage • Digital Imaging • Column Covers • Illuminated & Non-illuminated Directories • Custom Fabricated Graphics

425 Series ¥ V1HC Monumental Frame
Size: 13 5/8" w x 15 1/2" h x 2 1/4"

400 Series ¥ V1HC Standard Frame
Size: 13 5/8" w x 15 1/2" h x 1 9/16"

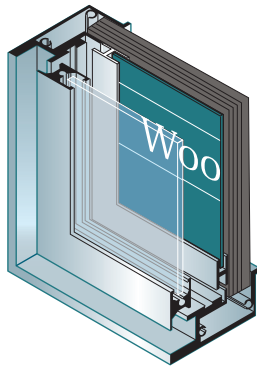


Elevation 425

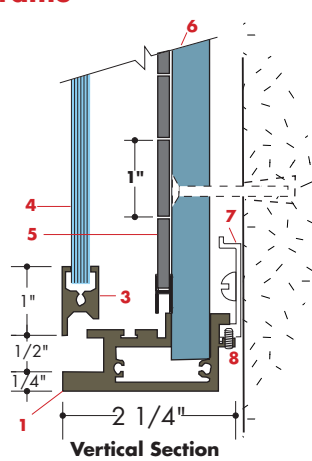


Elevation 400

425 Series Monumental Frame Ideal for Larger Directories

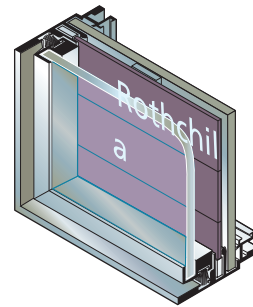


Isometric Cross Section

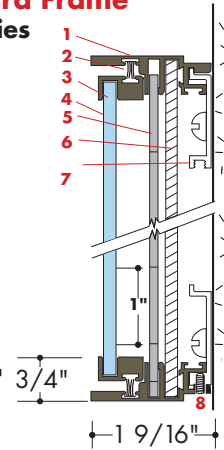


Vertical Section

400 Series Standard Frame For Smaller Directories



Isometric Cross Section



Vertical Section

Standard Directory Sizes for 425 & 400 series

Directory Height:	30 1/2"	23"	15 1/2"
13 5/8" x 13 5/8"	V1	V1B	V1C
13 5/8" x 18 5/8"	V1H	V1HB	V1HC
18 5/8" x 13 5/8"	V2	V2B	V2C
18 5/8" x 18 5/8"	V2H	V2HB	V2HC
38"			

Order Codes	1" Strip Limit
V1 & V2	= 29
V1H & V2H	= 24
V1A & V2A	= 37
V1HA & V2HA	= 32
V1B & V2B	= 22
V1HB & V2HB	= 17
V1C & V2C	= 14
V1HC & V2HC	= 09

Section drawing description 400 & 425 Series

- Aluminum Outer Frame Extrusion
Frame Depth: 1 9/16" & 2 1/4"
- Dust Seal
- Glass Cover Panel Frame Extrusion
- Clear Glass Cover - 3/16" & 1/4" Thick
- Acrylic Name Strips
Size: 1 X 13" X 1/8" or 1" X 18" X 1/8"
Special Width Sizes available
- Tempered Hardboard / Particle Board
- Mounting Bracket or toggle as required
- Allen Head Set Screw

The 400 & 425 Series non-illuminated directory features a large 1" wide message strip and design format that accommodates larger letterstyles and sizes for tenant buildings requiring fewer strips.

Directory Sizes

Two Frame configurations are available - 400 Series lighter frames for smaller directories and the 425 Series Monumental Frame for architectural applications. All sizes are available in Standard lighter frame and in the Monumental Frame series. Standard sizes are below:
Two width variations: 13 5/8" & 18 5/8".
V1 Series = 13 5/8" & V2 Series = 18 5/8".
Heights: 15 1/2", 23", 30 1/2" & 38".
Special sizes, combining several columns of copy within one unit, are available, using the 425 series. Wider dimensions to accommodate additional copy columns should use 425 Series heavy frame directory series.

Aluminum Frame Finishes

Anodized clear satin natural, medium bronze duranodic 312 and black duranodic. Painted finishes in custom colors are available.

Cover Panels and Door Types

The standard cover panel is a hinged clear glass door that is retained by spring retainers (400 series) or ball catches (425 Series). Clear acrylic plastic material can be substituted for clear glass if required. Doors with tamper-proof retainers for locking can be specified. A dust-seal, which is recessed into the reveal area between the frame and glass cover panel or door, assures perfect alignment and ease of maintenance.

Header Panel Information

Header panels are offered in either 5" or 8" heights and the width dimensions as required. A standard 1/4" strip of contrasting color is maintained between directory and header panel.

Mounting Information

Units are surface mounted as standard or may be recessed into a finished opening. When directories are recessed into an unfinished edge opening, a 1" x 1" x 1/8" aluminum "L" angle cap molding is available. Specify if exterior mounting is required. Standard mounting brackets, installation and maintenance instructions are supplied with each directory. Fabrication drawings indicating all details are provided for approval.

Directory Strip Information

Description: Non-illuminated acrylic plastic name strips are retained within the channels of the frame and are stacked one upon the other. Strips are completely interchangeable and can be moved to any point when changes occur.

Materials: .125" thick satin matte finish acrylic with 2nd surface color.

Strip Sizes: V1 Series 1" x 13" x 1/8" and V2 Series 1" x 18" x 1/8".

Colors: 24 standard Vomar acrylic colors.

Letterstyles: 28 standard Vomar acrylic styles.
Letter sizes: 1/4", 3/8" & 1/2" or larger space permitting.
Copy color: Screen-printed black and white or removable vinyl die cut copy. Note: Each directory module is shipped with either inserted blank strips or printed strips per copy requirements. Special height strips are available.